

Why Now?

As participation in outdoor recreation continues to grow, we are meeting that need with quality well-designed infrastructure. The proposed Highway 78 Bridge and over 1.5 miles of new trail is the next step to improving the entire length of the Pinhoti and continuing to grow the region's economy through the burgeoning recreation marketplace.

Building on our successes at Flagg Mountain and Jogloma-Scott Lake, the ATF is taking on another strategically located trail improvement that rises to the standard of "legacy". Located just outside Heflin, Alabama the US 78 Bridge Project will be designed to transform a missing portion of the trail into a destination inviting people of various abilities and experiences to enjoy the beauty of Alabama's southern Appalachians. It will be a statement and part of a comprehensive approach to elevating the Pinhoti to a national standard, while providing connections to nearby communities.



Recently completed bridge at Jogloma-Scott Lake



How to Give?

Make your check payable to Alabama Trails Foundation or use the form below.

Submit Check to: Alabama Trails Foundation
c/o Ann Damon Haas
968 Linwood Road
Birmingham, AL 35222

Or visit alabamatrailsfoundation.org/give



Current Donors include:

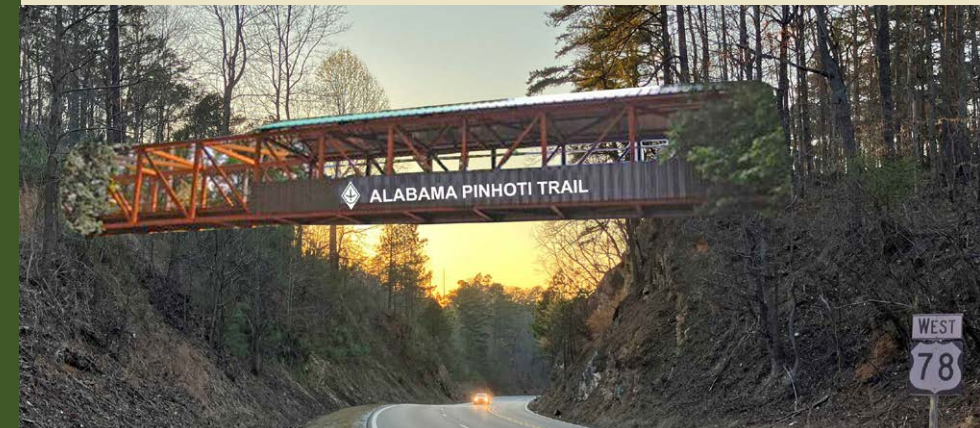
ATF Board of Directors
Mike & Gillian Goodrich Foundation
Eyes on the World Mapping
Nielson Family Fund
Robert Sprain
Bruce & Emilie Reid Family Foundation
Daniel Foundation
The Power of Good Foundation
(Alabama Power Company)

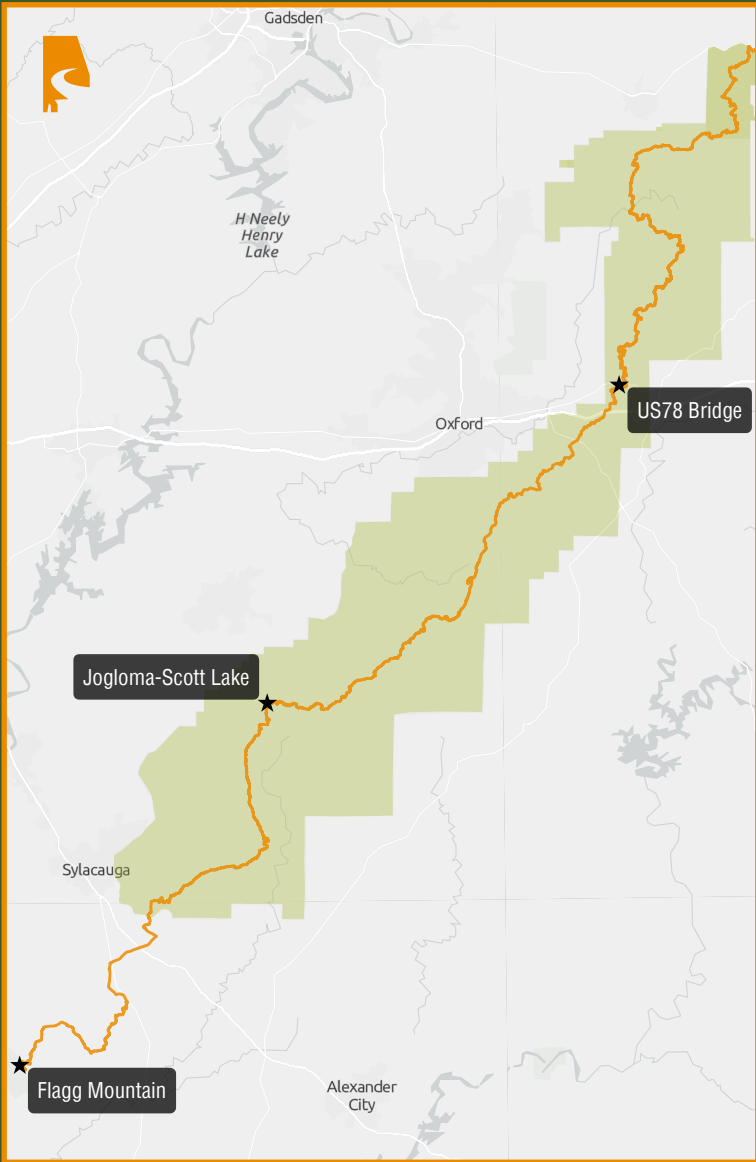
Norfolk Southern
Coca Cola United
Regions Bank
Protective Foundation
The Caring Foundation (BCBS of AL)
Innovate Alabama
State of Alabama



Alabama Trails
FOUNDATION

Help us bridge the gap—connecting the Pinhoti Trail and building an outdoor recreation economy.



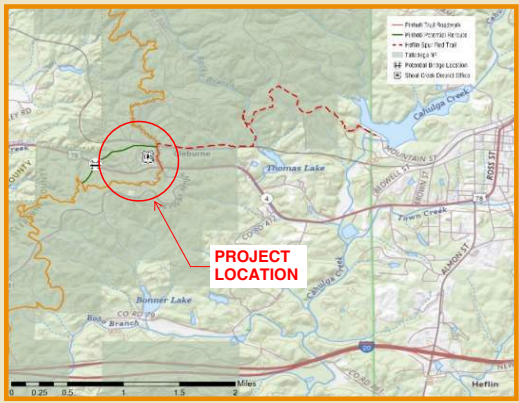


Alabama Pinhoti Trail: 170 miles

U.S. Highway 78 Pinhoti Bridge Project 2025 Update: securing the Pinhoti's legacy as Alabama's premier outdoor destination

Partnering with design experts Goodwyn Mills Cawood, this bridge will enhance the hiker experience, encourage new visitors through accessible design, and elevate the Pinhoti Trail to a more nationally recognized standard of excellence.

We are connecting two segments of the Pinhoti to create a safe, welcoming scenic landmark that unlocks eligibility for National Recreation Trail status. This project creates an ADA-accessible link to the Ranger Station and parking area, and provides a positive impact for rural Alabamians, all within 1.5 hours of the major metropolitan areas of Atlanta, Birmingham, and Montgomery.



PINHOTI TRAIL LEGACY PROJECT Preliminary Trail Alignment

