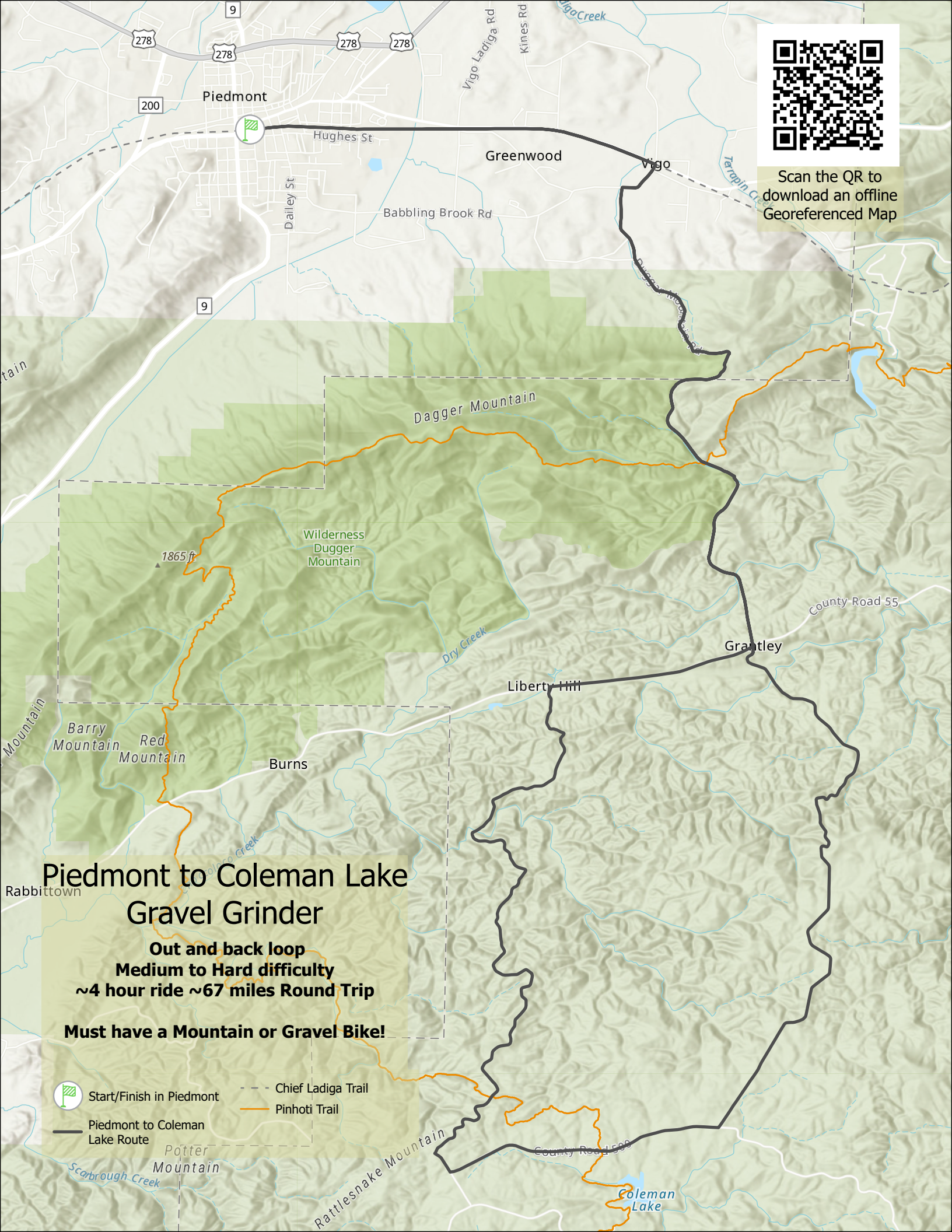




Scan the QR to
download an offline
Georeferenced Map



Piedmont to Coleman Lake Gravel Grinder

Out and back loop
Medium to Hard difficulty
~4 hour ride ~67 miles Round Trip

Must have a Mountain or Gravel Bike!



Start/Finish in Piedmont

--- Chief Ladiga Trail

— Pinhoti Trail

— Piedmont to Coleman
Lake Route

Potter
Mountain

Scarbrough Creek

Rattlesnake Mountain

County Road 1500

Coleman
Lake